

Panasonic KXTDE 100-200

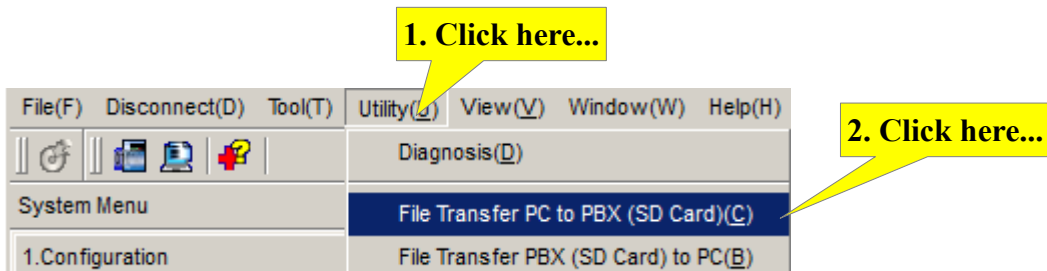
Upgrade the Digital Station Card to Version 8.001

Telquest Tech Support

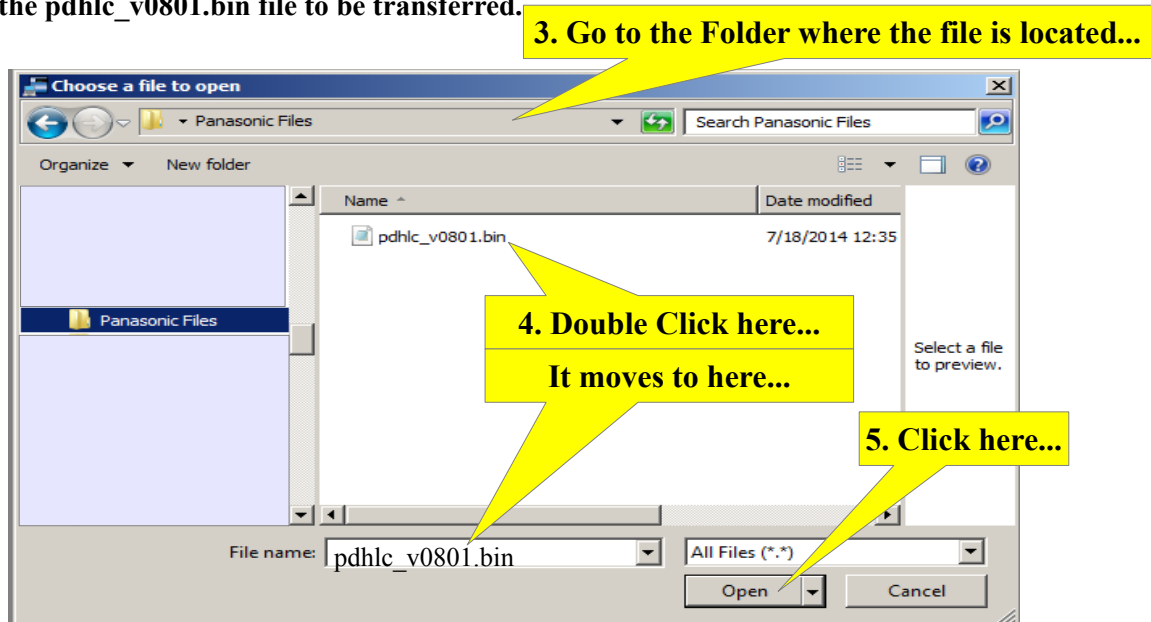
Upgrade Procedure:

Connect to the system using the latest version (7.8.1.1) Unified Maintenance Console (UPCMC).

Click on the Utility menu and then click on File Transfer PC to PBX(SD Card)

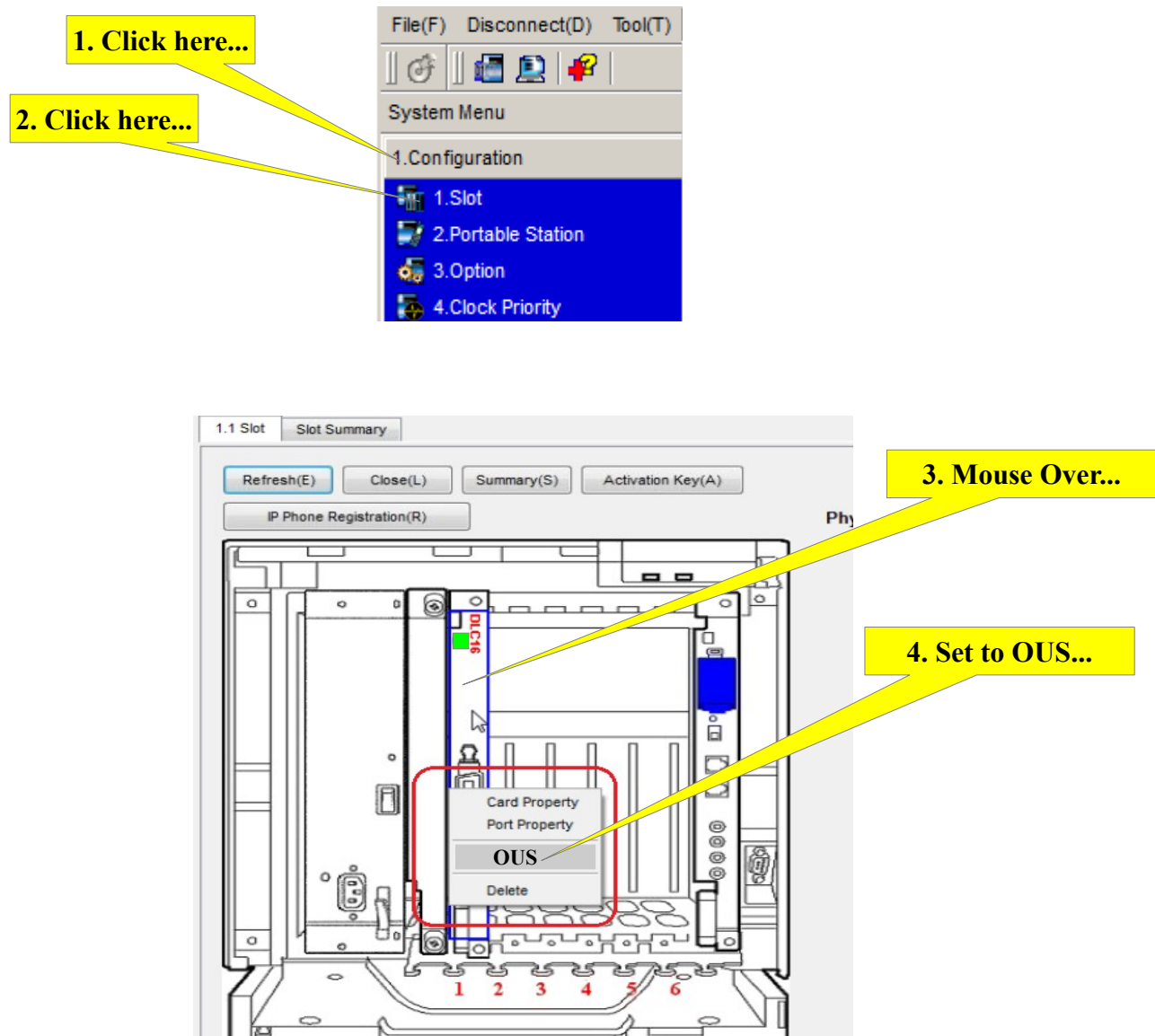


Then choose the pdhlc_v0801.bin file to be transferred.



When the file transfer is complete, go to:

1.Configuration, 1.Slot and take the DHLC/DLC card you want to upgrade OUS. (Out of Service)

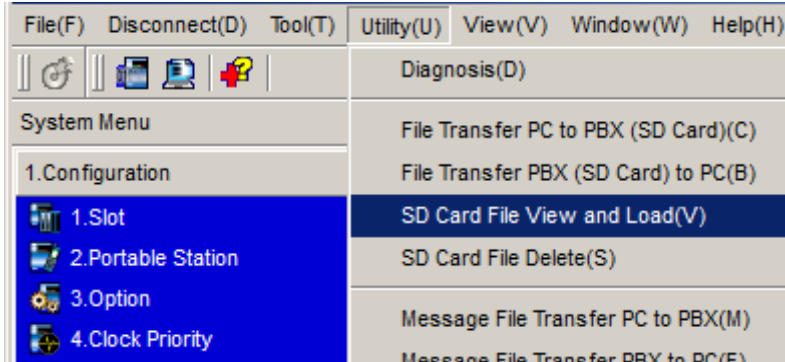


Links to Panasonic Files:

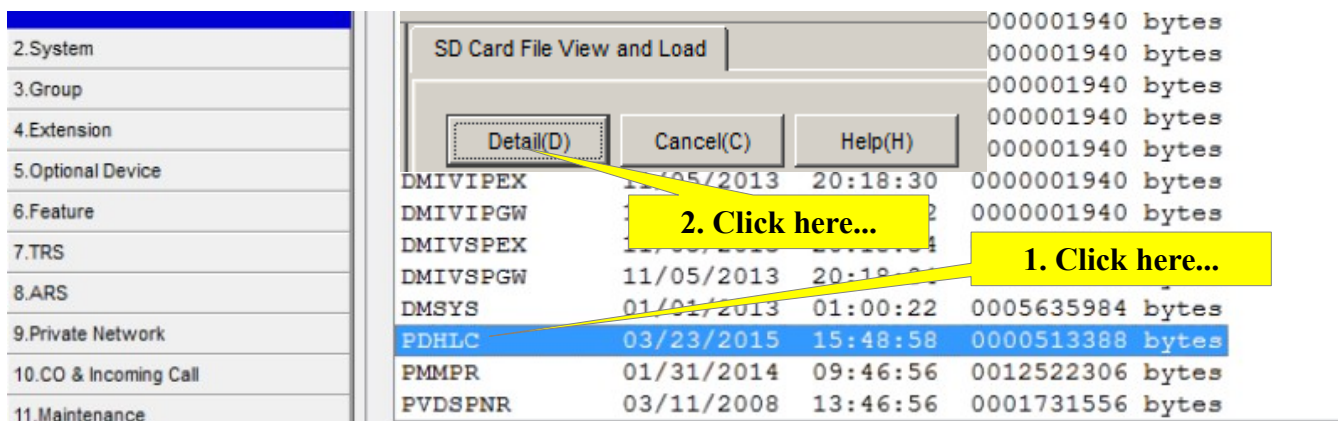
[Panasonic Programming Console UPCM v7.8.1.1 Link](#)

[DLC-DHLC Digital Station Card Upgrade Link](#)

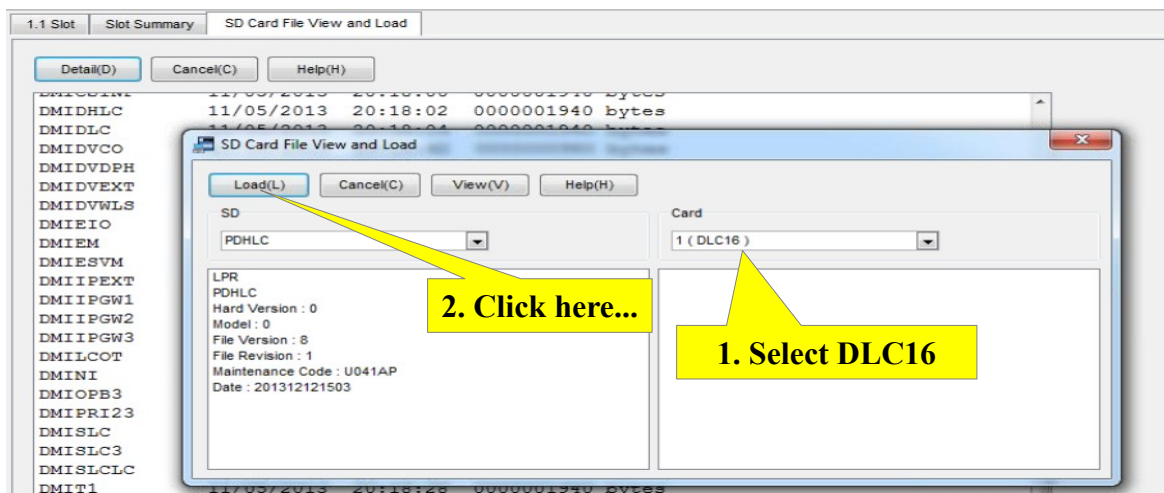
Go to Utility menu, select the option SD Card File View and Load.



Select the PDHLC upgrade file you just transferred to SD card and click the Detail button.



When new dialog window appears, select the DLC/DHLC card from the drop-down menu on the right to be upgraded and click the Load button.

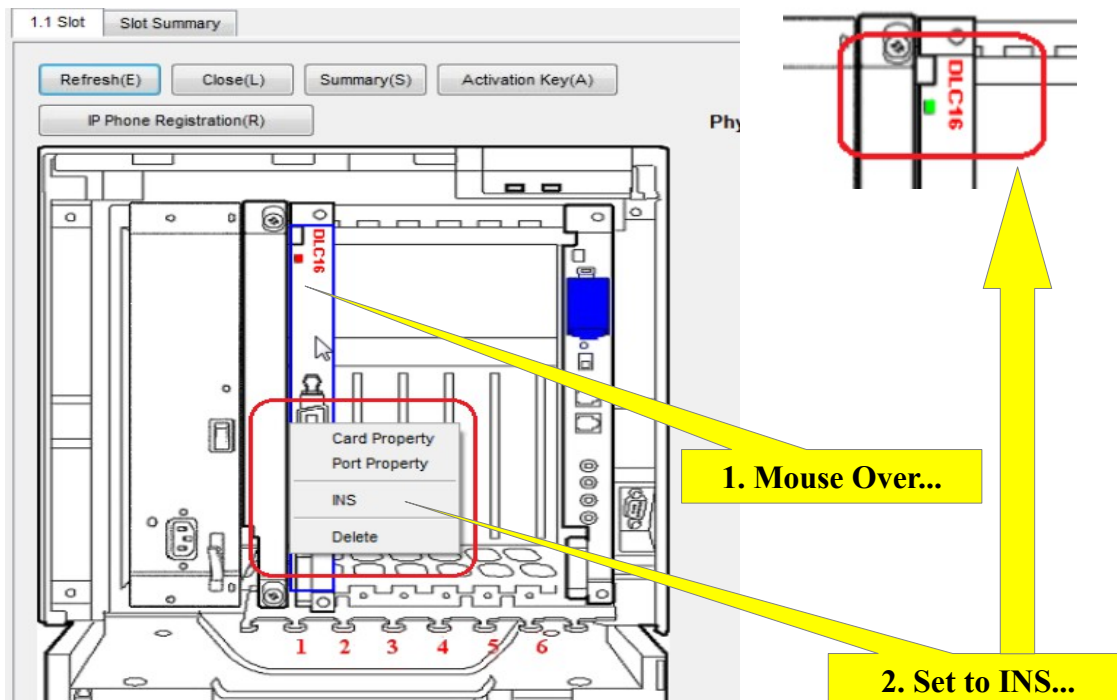


When the upload is complete you will receive a confirmation message.

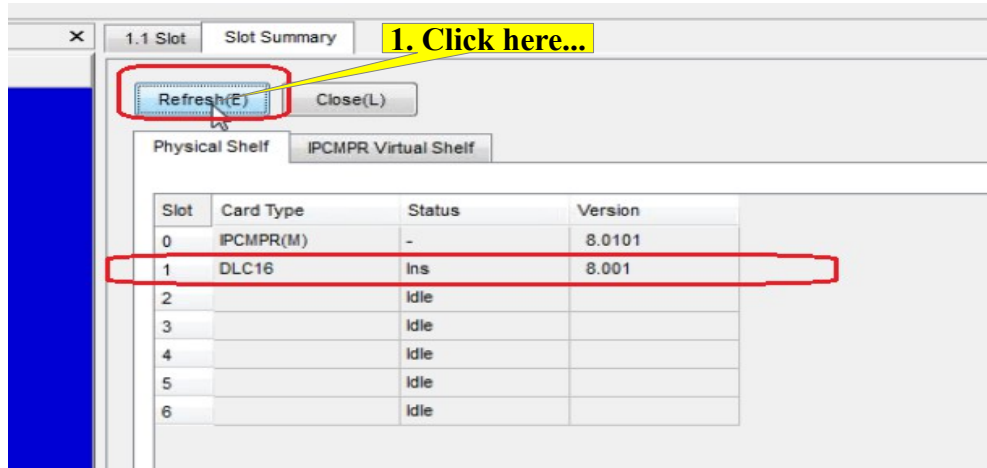
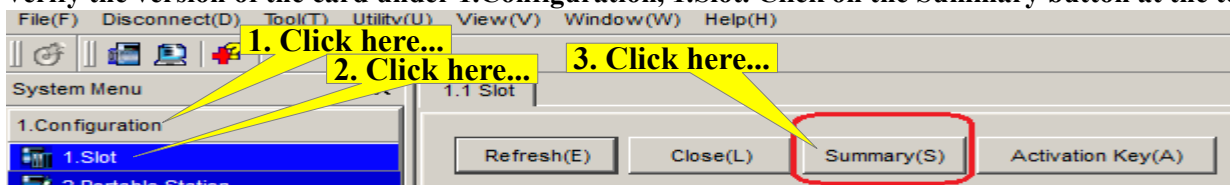
Exit from all screens to go back to screen 1. Configuration, 1.Slot.

Put the upgraded DLC/DHLC card back INS. (In Service)

The LED will turn Green...



Verify the version of the card under 1.Configuration, 1.Slot. Click on the Summary button at the top.



Upgraded version will be 8.001. Upgrade is complete...